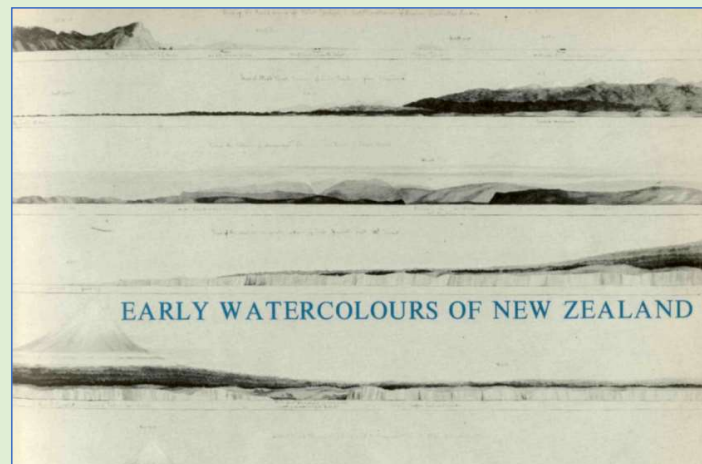


Alfred Sharpe



1963



Environs of Auckland



View of Taupiri village
and plain from the top
of Little Taupiri Hill.
Sunset



Logging in
the
Coromandel

Contemporary Watercolourists:

Fox 1812-1893
Richmond 1822-1898
Gully 1819-1898
Chevalier 1829-1902
Kinder 1819 -1903
Sharpe 1836-1908
Hoyte 1835-1913

No known
portrait exists
of Sharpe

Unlike New Zealand contemporaries such as John Gully and J. B. C. Hoyte, he rarely repeated his compositions.

Alfred Sharpe was baptised on 30 September 1836 at Tranmere, near Birkenhead, Cheshire, England.
Studied at the Birkenhead School of Arts,
Arrived at Auckland on the Tornado on 26 September 1859

Added the more distinguished final 'e' to his family name

Settler on the Mata Creek estuary near Mangapai, south of Whangarei. 1866, married Jane Jeffares from Ireland, no children.

They settled in Auckland. Sharpe relinquished his Mata Creek property.

During the 1870s Alfred Sharpe exhibited large-scale watercolours with the newly founded Auckland Society of Artists and at venues in Wellington, Sydney and Melbourne, as well as in Auckland shop windows. Later in the decade he organised solo exhibitions in the form of art unions, or raffles. While he regarded himself as a professional artist.

A full-time position as an architectural draughtsman and part-time art teaching.
Sharpe produced probably between 100 and 150 paintings in New Zealand, of which fewer than 100 have survived.

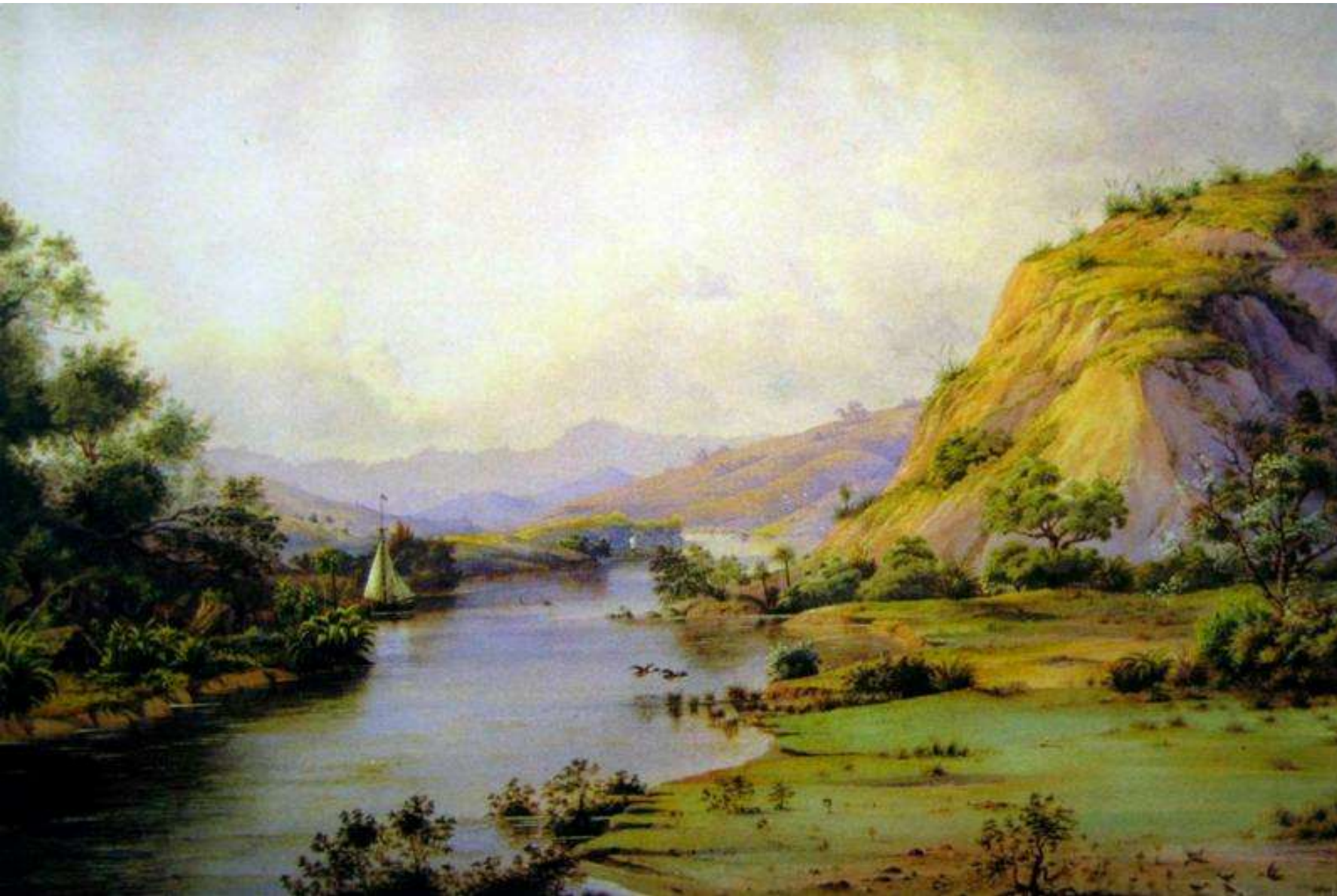
Geographically the works range from the Bay of Islands to Waikato and the Coromandel Peninsula, concentrating on sites within easy reach of Auckland.

Became profoundly deaf, He had deaf friends and learned the manual sign language.

His wife Jane was an invalid, reportedly an alcoholic and hypochondriac.

Increasingly, Sharpe took up writing as a creative outlet. "Hints for landscape students in water-colour"
New Zealand's leading art theorist of the nineteenth century

Sharpe published a significant number of pseudonymous articles arboriculture, acclimatisation of vermin, political corruption and a host of other topics, consisting of over 100 lengthy essays. "Cantankerous and chauvinistic".



Old Native Pah
and Burial
Ground,
Entrance of
Mata Creek,
Mangapai.
Daylight Effect,
After Rain 1877



Pohutukawa, near the
landing place below
Lake Pupuke,
Takapuna



Golden
Eve
Waiheke



A jam in the lava cleft, Hay's
Creek, Papakura



Burial place of Hone Heke, Bay of Islands



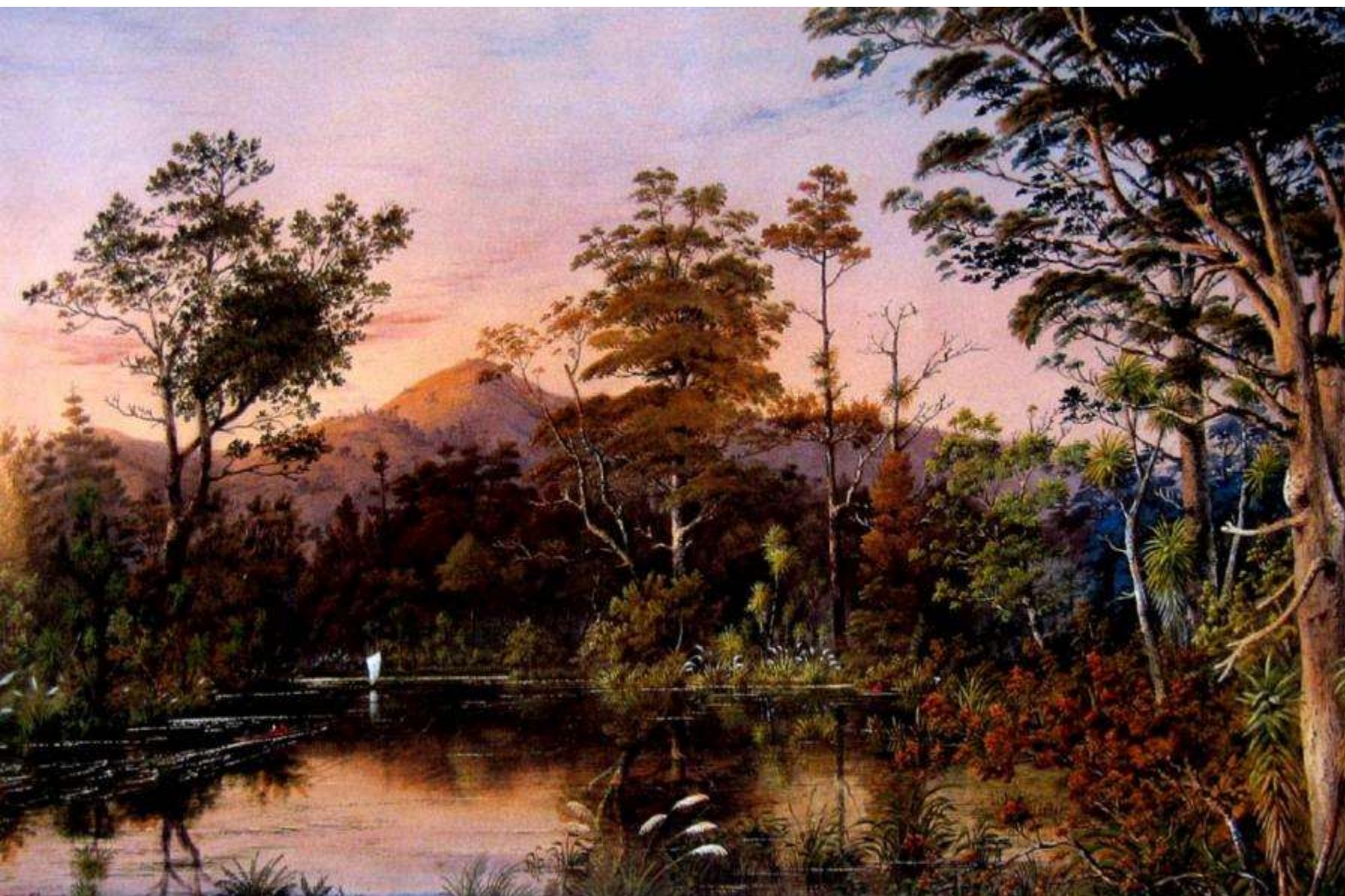
*Mt Moehau,
Coromandel*



Remuera



Gates of Dawn



Twilight on the
Swamps of The
Awaroa, in Flood
1887



View Through the Bush, Matakatia Bay with Kotanui Rock,
(Frenchman's Cap), Whangaparaoa Peninsula



Auckland Domain



Shoal Bay,
Auckland



Cox's Creek, Westend
Road, Westmere
? Also called Hobson
Bay Remuera



Native Storehouse



Ngaheia House, Bay of Islands

Off East Cape Islet New Zealand



In 1887 Sharpe moved to Newcastle, New South Wales and abandoned his wife, although he paid for her upkeep in the Auckland old people's refuge until her death there on 2 May 1888.

Continued painting in Aus but his works are little regarded

Died in 1908 at Newcastle

From leaving Auckland until the 1960s was forgotten.