



Eric Ravilious





Eric Ravilious



Foreign Travels

1924 Traveling Scholarship – Italy
– little obvious reflection in his art. Spent a lot of the time there in the company of Henry Moore who was a fellow travelling scholar.

1939 France – perhaps reinforced his admiration of Seurat.

Rye Harbour 1938



Eric Ravilious



Mural: Midland Hotel, Morecambe - Reproduction

Eric Ravilious



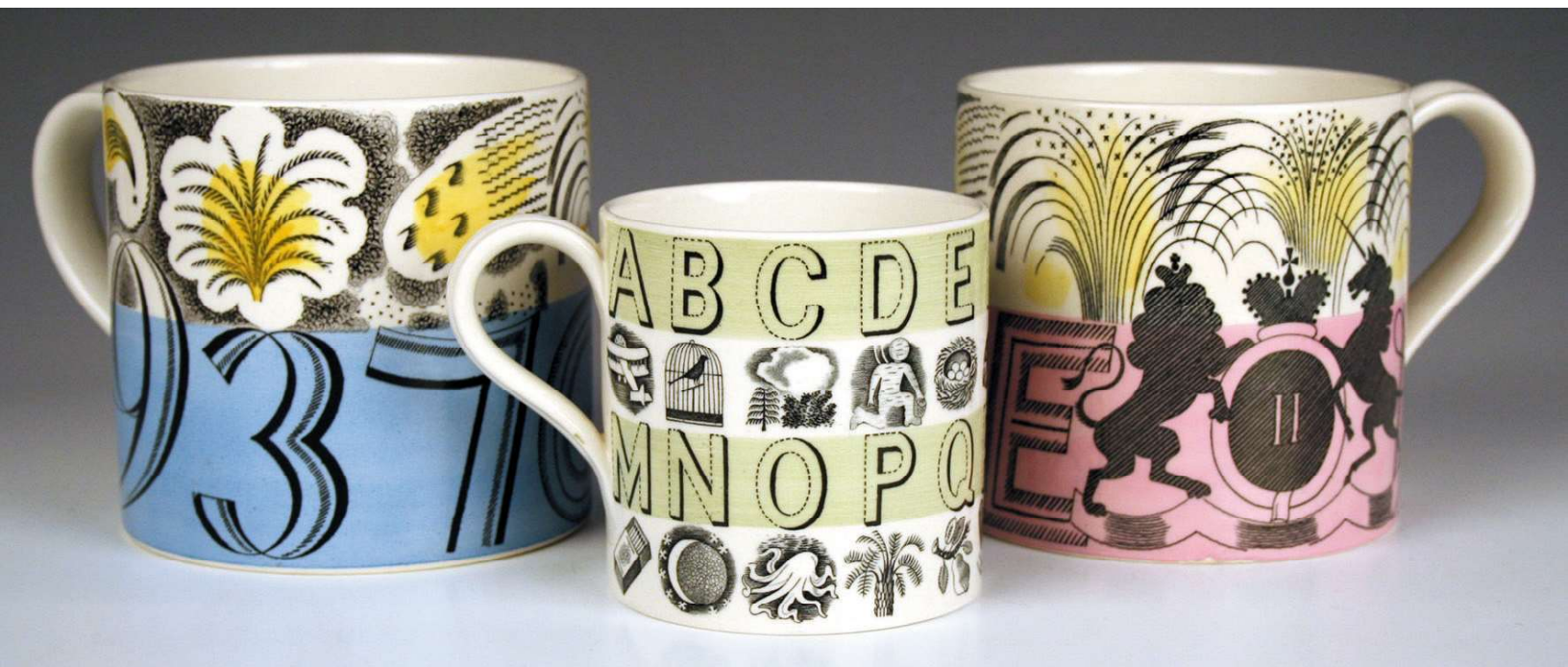
Mural: Life in a Boarding House –
destroyed by bombing in the war.

Eric Ravilious



Mural (on doors): Sir Geoffrey Fry's Music Room in Portman Square, London.
Now in Bristol Museum

Eric Ravilious



Commissions for Wedgwood

Eric Ravilious



Wedgewood

Eric Ravilious



Postage Stamp Centenary Stamp Design
Ravilious design and actual used (H.L. Palmer).

Eric Ravilious



ALFRISTON

SEE BRITAIN FIRST ON SHELL

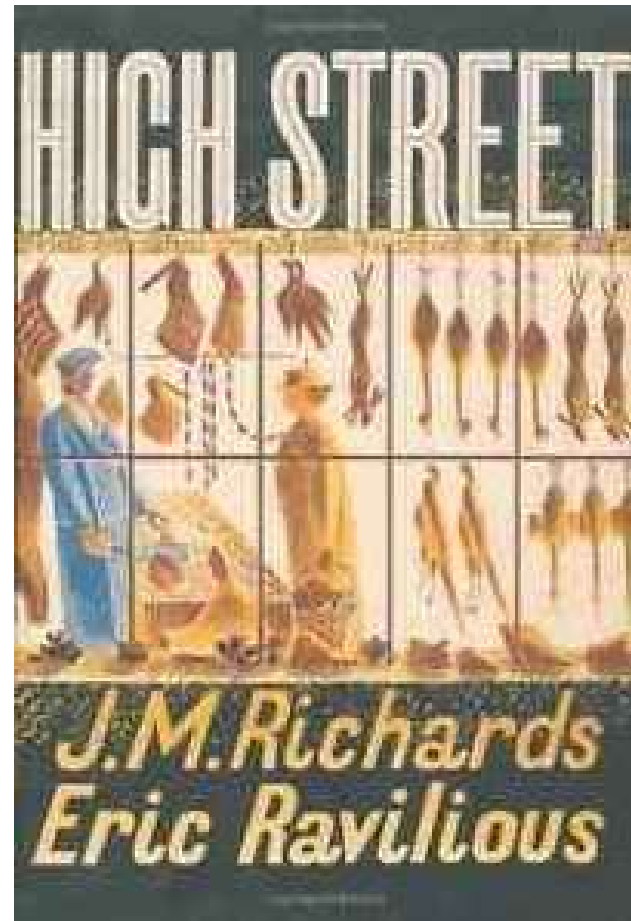
Poster art

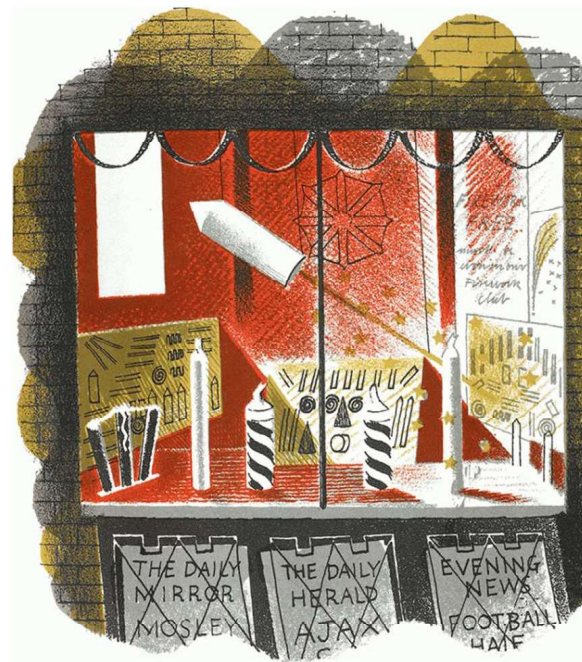
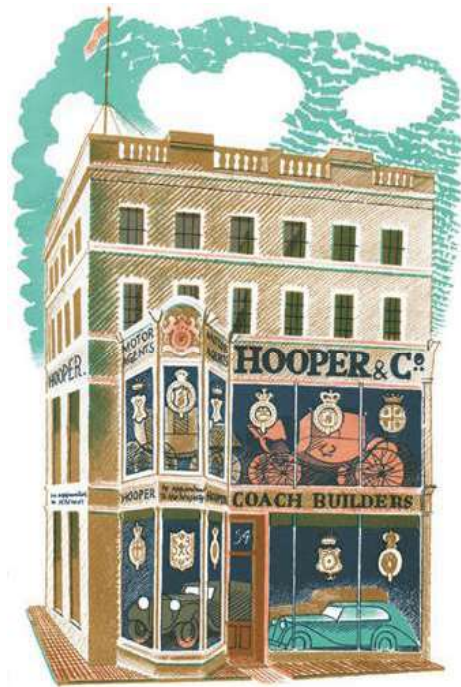
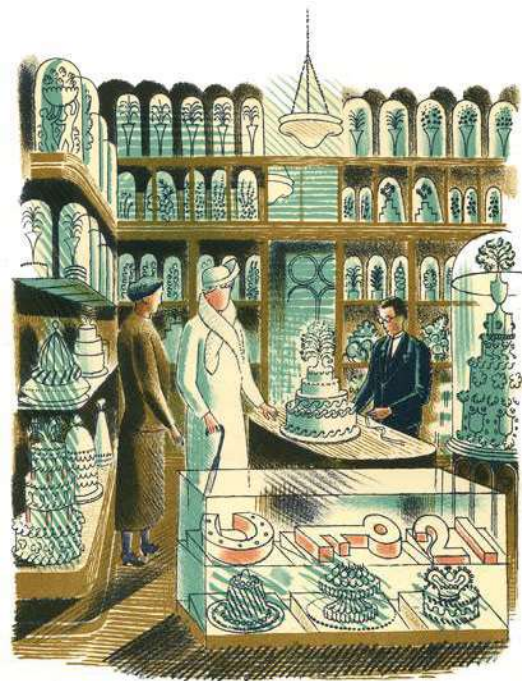
Eric Ravilious

High Street 1938

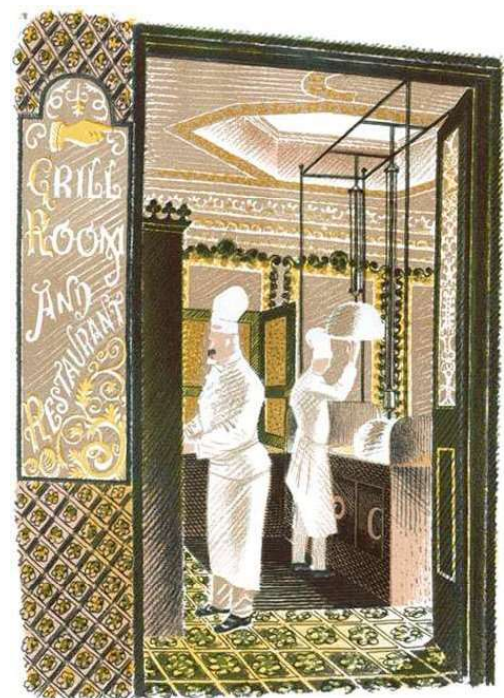
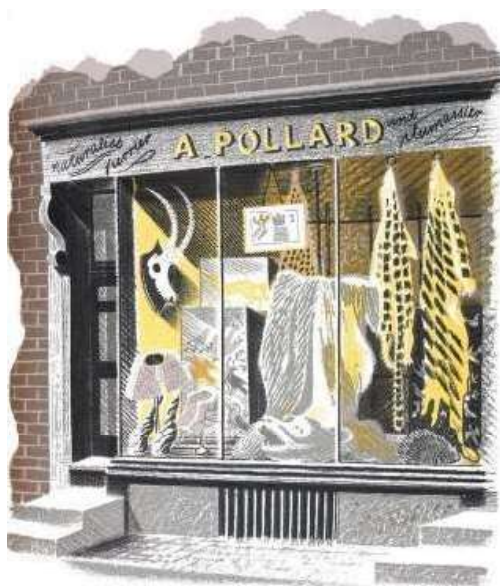
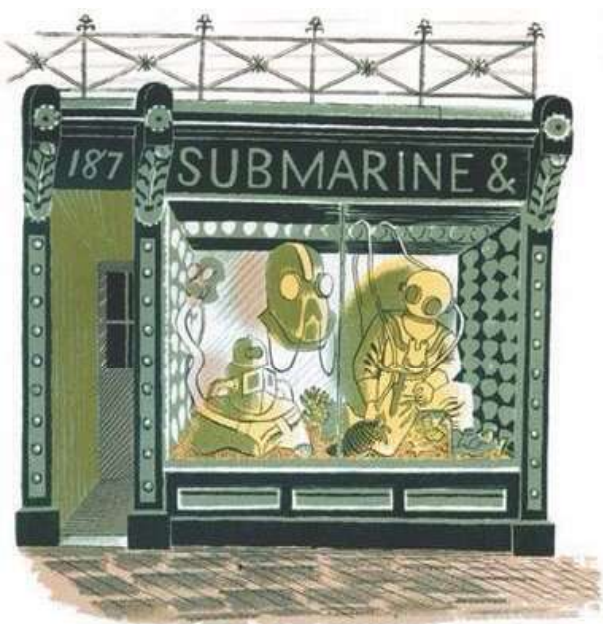
Originally conceived as a children's book was finally an illustrated book with an architectural historian as co-author. Remained in print ever since. Was a retrospective view even when published – by Country Life. Illustrations often used to invoke the period between the wars.

Eric Ravilious





Eric Ravilious



Eric Ravilious

War Artist

Was aged 36 when the war started – with no obvious military propensity.

He served briefly in Observer Corps.

Invited to become a war artist by the War Artists' Advisory Committee in December 1939. He was given the rank of Honorary Captain in the Royal Marines and assigned to the Admiralty from early 1940.

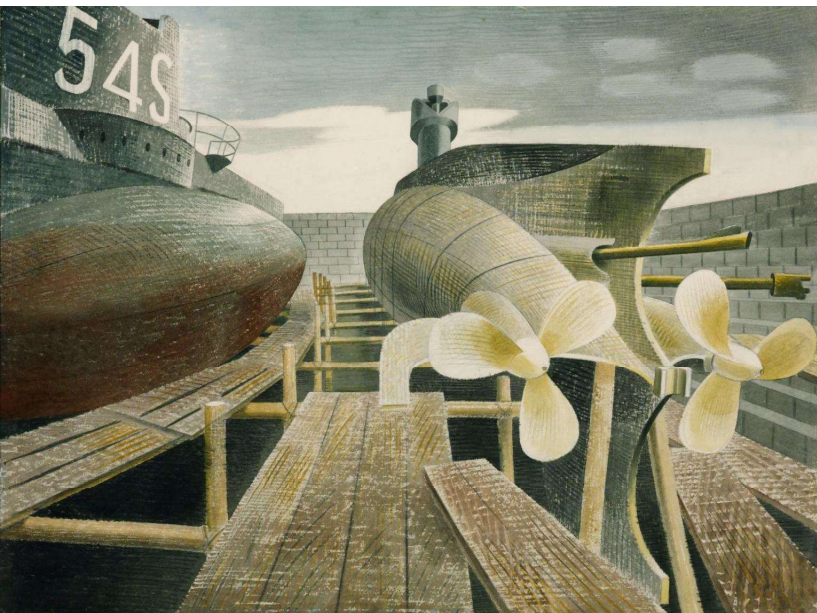


Observation
Post 1939

Eric Ravilious

Prolific War Artist

Submarines in dry dock



Submarine **escape practice tank**

Eric Ravilious



Aircraft Carrier Ark Royal in action 1940

Eric Ravilious

Leaving Scapa Flow 1940





HMS Glorious in the Arctic 1940

Eric Ravilious



Runway perspective

Spent time with the army and air force, increasingly fascinated by planes.

Eric Ravilious

R.A.F. planes on an airfield



In August 1942 he was at RAF Kaldadarnes in Iceland.

An RAF Hudson was missing.

He joined a search flight in another Hudson.
The search plane never returned and further searching revealed nothing of either.

The model was prone to icing – the probable cause of the loss of both planes.

Eric Ravilious



Rex Whistler 1905 - 1944

- Landscape and portrait painter
- Illustrator
- Muralist
- Stage Designer
- Cartoonist
- Unofficial war artist

".. politeness and charm coupled with modesty and above all a sense of purpose"

"full of fun and mimicry of our grand visitors ..."

Rex Whistler



Self portrait

Born Eltham – then a village south of London
Father Harry ran a small building business, mother
daughter of a clergyman.
Precocious artistic talent from school age
Royal Academy (sacked for incompetence)
Slade School
First commission was a mural organized through the
Slade School's head, jointly with another student.
Travelled with wealthy parents of an art school friend
to France, Switzerland and Italy
Never married
Many affairs - both sexes

Student piece
Life class

Rex Whistler



Most famous for Murals



Tate Britain
Rex Whistler
Restaurant

Rex Whistler



Tate Britain Restaurant

Rex Whistler



Dining Room Mural – Capriccio – Plas Newydd Anglesey

Was a close friend of the family – head Charles Henry Alexander Paget, 6th Marquess of Anglesey - painted them collectively and individually

Rex Whistler



Often painted Lady Caroline Paget – socialite and minor movie actress



Rex Whistler



Rex Whistler



Dudley Ward sisters
Mrs Dudley Ward – displaced by
Wallis Simpson on Edward 8th's
affections.
Claude like landscape

Rex Whistler



Rex Whistler

Self
Portrait



Edith
Olivier



Tallulah Bankhead

Rex Whistler

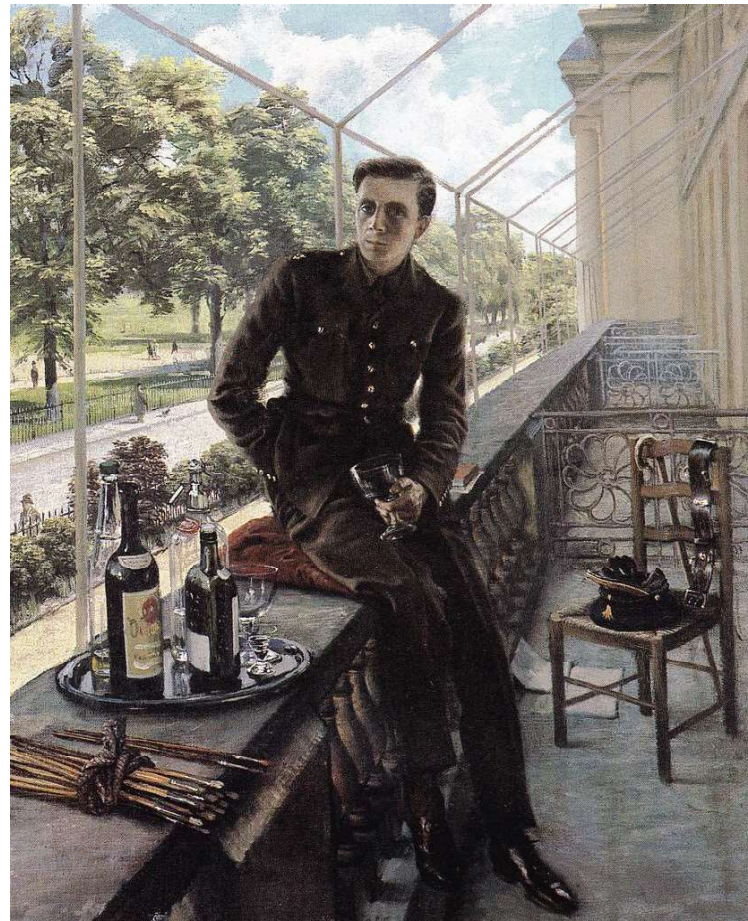
War

- Was not invited to be a war artist – nor did he suggest himself. Kenneth Clark was subsequently criticised for not including him, but in fairness his obvious talents were removed from the needs. Clark did seem to have a preference for his friends
- Expected to be called up
- Wanted to be an officer – but general direct officer entry was precluded early in the war – would have had to work up the ranks.
- Brigade of Guards still had freedom to take in new officers. Rex applied and was accepted by the Welsh Guards.
- Late in the war successfully resisted a transfer to a staff job
- Was popular with his men taking a close interest in their welfare.

Self portrait

“... painted on the day his Welsh Guards uniform arrived in May 1940”

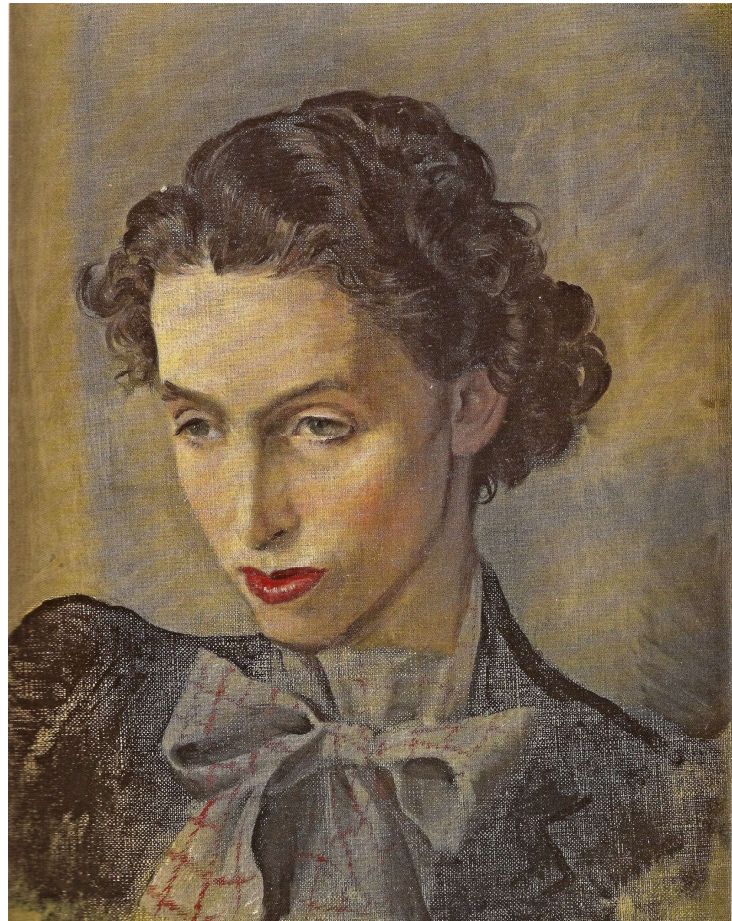
In a borrowed flat overlooking Regent’s Park



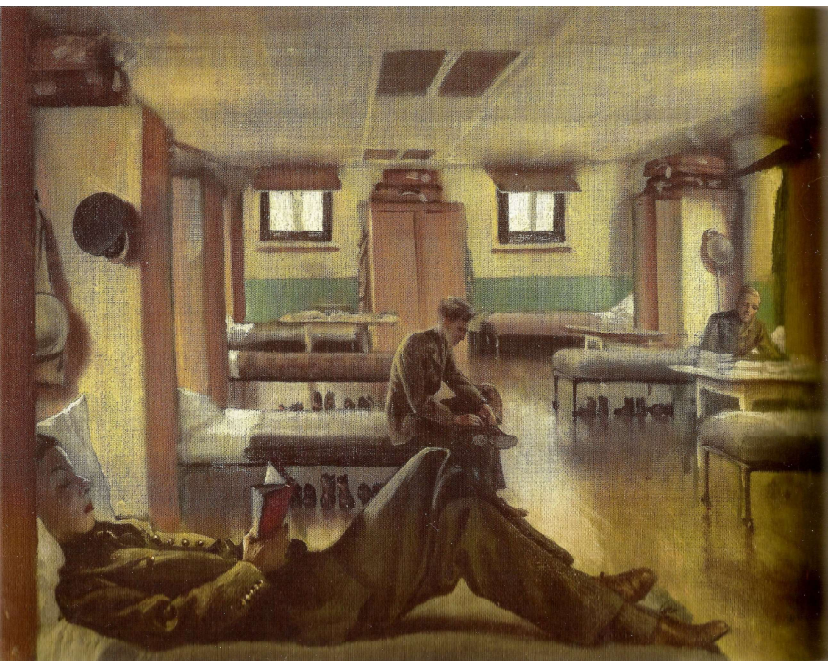
War Time Affairs

“Beautiful unhappy wives.”

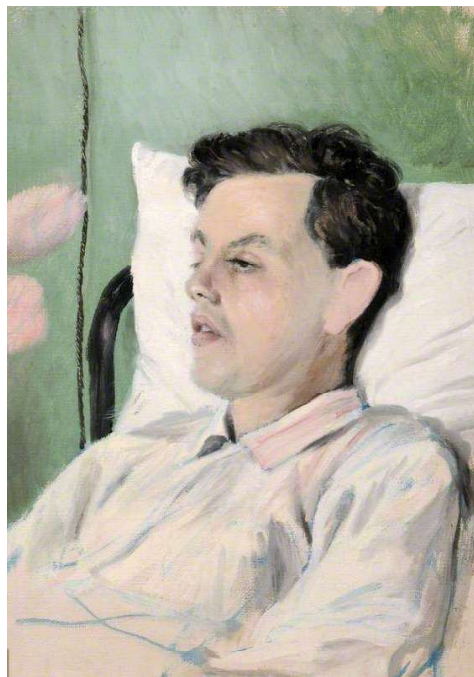
The Viscountess Ridley



Painting continued



Rex Whistler

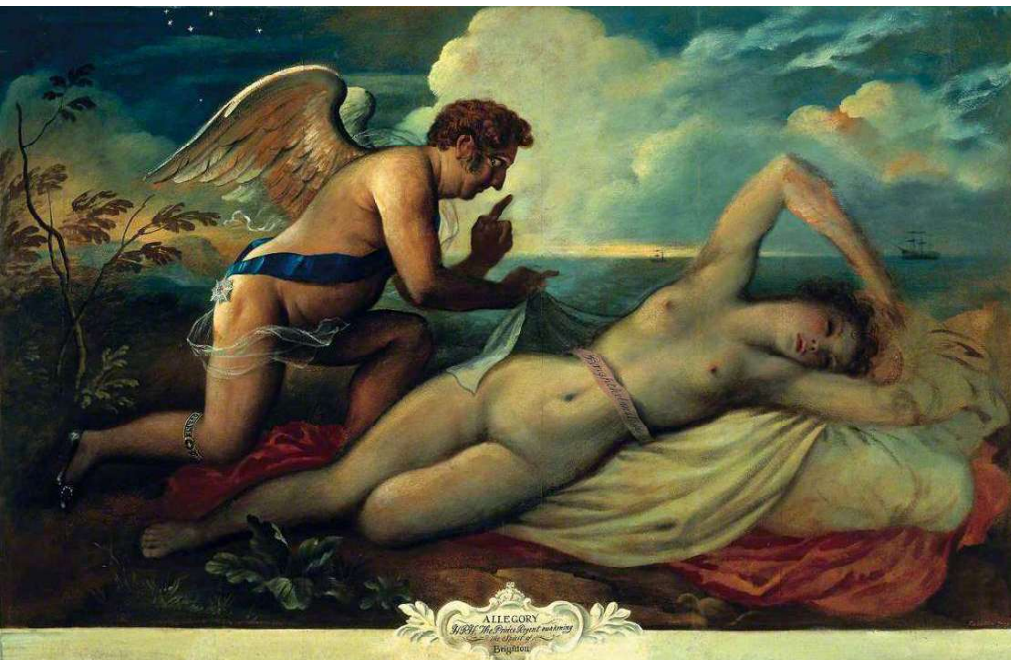


Rex Whistler



- Decorated mess rooms
- Did stage decorations for unit entertainments
- Continued to undertake London stage designs and did illustrations for books
- Unit converted to an armored regiment – missed a posting to 8th army in North Africa as a result

Some amusements of his own:



Killed in action – the unit's first day of action in Normandy

Flood of tributes to The Times – among them Alec Guinness

Evelyn Waugh
Brideshead Revisited
Novel 1945
Granada Television TV Series
1981

The principal protagonist in the novel Charles Ryder has the occupation of an architectural decorator, operating as an upper class individual skirting on the periphery of the aristocracy. Waugh moved in the circle of Whistler so may have had the idea of this being a fitting occupation from knowing of him.

The TV series used murals at Castle Howard (Yorkshire) to represent Ryder's supposed work. Actually they are the work of expatriate New Zealander Felix Kelly.



- Social mobility as a driver – all had lower middle class or middle class origins – welcomed commissions and friendships amongst their artistic peers and amongst the aristocracy
- Broad output across different media and places
- Most aspired to country residence
- Relationships – broader than one might have expected? - however more permanent ones were within their own group / class.

Finis